



Cubit Estimating

2024
Release Notes

2024

Build: 12.0.3

Release Date: July 2024

Hotfix Update

- Resolved an issue with incorrect scale ratios and measurements for PDF plans imported as *Raster* when manually entering the scale.
- Closing a job located in a subfolder in the Job Manager no longer throws an exception.
- Resolved an issue where jobs were unable to open due to an invalid date format in the job data.
- The new Markup Value column title *Markup (\$)* now reflects the local currency symbol in other regions.

2024

Build: 12.0.1

Release Date: July 2024

New Features

Markup Value and Cost Total

Two new columns—Markup Value and Cost Total—have been added to the Estimate Sheet and Rate Sheet. These columns offer valuable insights into the markup applied to Composite Rates, Trade Items, Headings, and Trades and their total cost before markup. To facilitate this new feature, we have updated the title of the existing Markup column, which now appears as **Markup (%)**, with the new Markup Value column title appearing as **Markup (\$)**.

Additionally, the Job Adjustment dialogue now displays the total cost and markup value of the Job, further enhancing visibility and transparency in project pricing.

Rapid Bulk Delete

We are introducing the Rapid Bulk Delete feature to optimise the deletion process for large volumes of data, significantly improving the workflow efficiency for you.

Previously, deleting extensive data could take a long time due to the system's focus on live calculations and updates during the deletion process. The enhanced Rapid Bulk Delete provides a streamlined, faster option for removing large datasets. This update includes a customisable threshold setting, allowing you to tailor the feature to your needs.

What's New:

- **Rapid Bulk Delete Option:** When deleting large amounts of data, you can choose this faster method. This option does not support undo functionality but significantly speeds up the deletion process.

- **Customisable Threshold:** You can customise the threshold for the Rapid Bulk Delete function to suit your project sizes, computing resources, and requirements, adjusting how much data deletion will trigger this action.
- **Automatic Job Refresh:** After deletion, the job automatically refreshes to incorporate updates from other users or external references.
- **Standard Deletion Retained:** You can still opt for the standard deletion method to retain the ability to undo deletions.

Improvements

- Upgraded the database management system to PostgreSQL 16, offering performance enhancements and stronger security.
- Upgraded an infrastructure component to deliver better rendering and scrolling performance, with optimised memory management for a smoother, more responsive user experience.
- Upgraded the plan rendering agent, leading to enhanced pixelation quality and more accurate colour representation.
- Locking and unlocking trades in shared access mode is faster when many trade items are selected.
- Refreshing job is faster when many trade items are selected.

Bug Fixes

- Fixed the issue where active picked rates in the view would be replaced with estimate rates when grouping jobs with the 'transfer rate sheets' option selected, resulting in discrepancies in job totals.
- Double-clicking a count shape to enable edit mode no longer causes exceptions.
- Users can now seamlessly copy and paste cell references without needing to be in edit mode.
- Fixed an issue where users were unable to use the F4 Copy Down function on a Result cell.
- Resolved the issue where a Trade could contain quantity or rate, leading to program hang-ups during job operations.

- Users are no longer prompted continuously to update references when database and device time zones differ.
- Resolved the issue where changes made to the Pricelist might not be detected and applied in referenced jobs due to time zone differences between the database and the device.

2022

Build: 11.3.4

Release Date: February 2024

Hotfix Update

- Fixed an issue where deleting an item in a Calculation sheet would cause its items to be reordered based on date of creation.
- Fixed an issue where copying a Calculation sheet item to the bottom line will paste it at the top of the list.

2022

Build: 11.3.3

Release Date: November 2023

Hotfix Update

- Fixed an issue where renaming count shapes may cause errors when the shapes are visible in the viewport.
- Resolved an issue where some users were unable to open jobs due to certain count shapes having invalid locations.
- Fixed an issue where calculation sheet items couldn't be deleted when using PostgreSQL 9.2 or older with Cubit 11.3 versions.

Enhancements

Added scenarios where a license will be released for network users when 'Release license when exiting' is checked in Settings.

- License will be released when the computer goes to sleep
 - **Note:** If the user locks the computer, but it does not go to sleep, the license won't be released.
- License will be released when the computer shuts down
 - **Note:** In case of a power failure, the license may not be released due to insufficient time to complete the process.

Performance Improvements

- Increased takeoff performance for the "Count" tool.
 - **Note:** with the new performance increases, the functionality of the count tool has changed; when selecting the count tool, you can add multiple count points to a plan/take off; however, these are not saved UNTIL you right-click'

- Increased viewport performance for importing and loading PDF Plans with a large number of entities:
 - Added a new feature that will auto-rasterise complex layers with a certain number of elements when importing PDF plans.
 - Added the ability to define thresholds for the automatic rasterisation of complex plan layers in the settings.
 - Added ability to rasterise and un-rasterise specific layers in a plan.
- Improved response time for closing shapes during takeoff.
- Improved performance when copying jobs in the job manager screen
 - **Note:** Performance improvements are more significant for larger and more detailed jobs.
- Cubit Select integration-related performance:
 - Improved response time when the system sets empty quantities to 0 or 1 before sending jobs to Cubit Select.
 - Improved the response time of the system receiving picked rates from Cubit Select.
- General performance improvements in the Estimate Sheet functions, including item insertion and data entry in cells.

Other Improvements

- Added the ability to export Price Lists as Excel files from the Home Tab.
- Added the ability to set the 'Add Exclude from Tax' Checkbox in the Details Pane.
- Added the ability to use CTRL + (Arrow keys) to move word by word through text descriptions in Cubit Estimating.
- Improved the database backup experience for larger databases:
 - Automatic check for available free hard drive space and notification if there is insufficient space for backup or restore
- Added the ability to sort the job list by when a job was last updated/worked on.
- Enhanced the enable and disable status of drawing tools when a trade or item is locked/unlocked by another user.

- Reduced the trade and item limitations for Student and Educational licenses.
- Improved the experience in cases where a time-out occurs due to a job taking longer than expected to send updates to Cubit Select.

Bug Fixes

- Resolved an issue with deleting merged jobs.
- Fixed corruption of Excel files generated from the "openings" library.
- Fixed an issue where the positions of window and door openings can be affected by the height of other shape results.
- The Vertical Area - Less Openings Result Type will now update correctly in the calculation sheet when the Shape/Shape Result is changed in real time.
- Resolved issue with finishing revisions hindered by window/door opening thickness.
- Certain plans can now be opened even with issues related to window/door models; if there are any issues, the system will display a list of affected items when loading that job/plan.
- Fixed intermittent exceptions during job refreshing with variation codes.
- Fixed crashes in specific scenarios that create circular references.
- Eliminated ability to create circular references in multi-user mode
- Fixed issue related to repeated prompts to refresh jobs when deleting locked door/window category.
- Prevented deletion of window/door when unable to delete opening due to lock.
- Fixed CTRL-A (Select All) functionality.
- Fixed exceptions during job refresh and finalising revision with consecutive creation of doors and windows.
- Ensured the first revised IFC plan is not hidden in the "Viewport" when refreshing the job.
- Fixed columns are no longer locked to a position/forced when using different layouts (e.g., Result column).
- Exceptions no longer occur when refreshing a job with the legend enabled and all shapes are hidden.

- Prevented deletion of opening from different plans when deleting shape.
- Undoing the deletion of an opening from the viewport or calculation sheet now immediately restores the window/door to the plan legend.
- The ability to create circular references in single-user mode has been eliminated.
- In a multi-user environment, two users can now use Excel Export consecutively without issues.
- Windows and doors no longer use the "length by center" icon on the legend.
- Fixed the intermittent issue of the Cubit Select login window disappearing behind the main Cubit window.
- Fixed a time sync issue where there was no prompt to update the option group of a job if edited by a user whose clock was behind the previous user.
- Fixed the issue where changing the position of a plan within the plans list would hide shapes/categories for that plan on the shapes pane.
- The legend is now immediately updated when undoing the deletion of a trade.
- Pressing Ctrl-V a second time after "Cut"-ing an item will no longer cause an exception.
- Copying a "Cut" calculation or rate sheet item to a different calculation sheet now creates a copy, as expected.
- Under specific circumstances, the "An error occurred in the Viewport" error is no longer displayed.
- Users are no longer prompted to refresh multiple times when trying to lock a trade using the estimate toolbar lock icon and cancelling the prompt.
- The lock icon on the estimate sheet toolbar now functions consistently.
- Selecting all the trade items using Ctrl+A and deleting now works as intended.
- The Plan report now uses the correct result type icons.
- Typing into the formula bar in the price list is now possible without typing in the estimate grid first.
- The Import/Export file explorer interface now shows all files.
- Exporting to Excel from a Grouped View now displays the correct Aggregated Quantity.
- Users are no longer prevented from unindenting a trade in the price list.
- An exception no longer occurs when copying an Estimate Item to the calculation Sheet.

- Fixed issue of IFC revisions displaying incorrectly for other users when refreshing a job in a multi-user environment has been successfully resolved.
- An exception when opening a 2D revised plan after another user has completed job revision has been addressed.
- Deleting trades is now faster.
- An exception no longer occurs when clicking on the Job Manager filter with two jobs selected.
- Errors related to exporting jobs in different project folders on the job manager screen are no longer displayed incorrectly.
- Updated the checkbox wording at the end of the server installation process.
- Calculations from the Rate Sheet using factors/wastage now correctly total in their trade headings.
- Sending more than one item from Global to a Cubit job containing a grouped view no longer causes an exception.
- New message dialogs are no longer pushed behind the Scale Plan dialog.
- Cut-Paste-Undo-Paste sequence no longer causes exceptions.
- The calculation sheet now updates correctly after a refresh prompted by trying to edit a calculation sheet item that another user deleted.
- Fixed time sync-related locking and refresh issues.
- Fixed time sync issue causing multiple refresh prompts and potential Cubit freeze for Windows 11 users.
- Fixed exceptions when another user deletes a large trade during refresh.
- The calculation sheet accurately displays deduction from vertical less area openings shape results.
- Fixed exceptions when editing window height/width/manufacturer after closing and reopening a job.
- Fixed errors related to exporting jobs in different headings on the job manager screen.
- Fixed jobs exported while in revision from Cubit 10 can now be imported into Cubit 11.
- Fixed unexpected behaviour when another user has an exclusive lock on a job.
- Estimate toolbar lock icon now functions correctly after job refresh.

- Toggling Include in Trade and navigating with arrow keys no longer triggers Edit mode on the next cell.
- Improved keyboard interaction with lock column in job.
- Fixed exception when Copying/Pasting Rate sheet item to calculation sheet.
- Updated result type icons on legend.
- IFC Revision status icons in the estimate sheet no longer unexpectedly display as the previous value when refreshing a second time.
- Jobs containing references can now be opened in read-only mode.
- Recalculating references now correctly clears reference cached values when items are deleted.
- Windows and Doors now remain in the correct position on the plan when moving a shape.
- Editing a large area in the viewport is now more efficient.
- Other actions on Shapes that should require a Refresh now function as expected.
- The Options/Variations filter state now refreshes when refreshing the Job.
- Toggling Options on the Options Pane now refreshes the Job as intended.
- Trades on exclusive mode jobs are now correctly shown as locked for other users.
- Plan Revision can now be added when the revisable plan has the Rasterise Text option enabled.
- The Code dropdown window now shows more items when expanded vertically.
- Undo now properly restores manual totals that were replaced by the rate sheet.
- At higher display scalings, the References pane now displays correctly.
- When first adding a PDF plan revision, information in the "Revisions tab" of the "Plans pane" is now displayed fully.
- The width of the double-door 3D model no longer resets after closing and opening the job.
- "Cubit Reports" no longer encounter exceptions in "Material and Labour" mode jobs with Excluded Items at level 1 in the estimate.
- Adding a column in Simple jobs no longer affects the column ordering of newly created Material/Labor jobs.
- The position of the "Update Select Job" dialog is now consistent throughout the program.
- Cubit job export projects with folders now work seamlessly.

2022

Build: 11.2.2.0

Release Date: December 2022

Performance Improvements

- Copy/Paste Performance of trades and large numbers of line items
 - Significant work has been undertaken to improve the speed for copying and pasting trades and the line data contained therein. This work has focused on large jobs and databases
 - The improvements have found an increase in speed and a return to the performance standards set by previous versions of Cubit Estimating
- The following actions will also benefit from performance improvements;
 - Opening the Job Manager and loading the project list
 - Closing a job
- **NOTE:** Actual results may vary depending on the current hardware/software environments used

Other Improvements

- When selecting “Note” as a result type, the unit column will automatically display as NOTE
- BOQ report continues Extended Descriptions on second pages
- BOQ report now wraps trade descriptions
- Cubit Estimating will display a loading window when recalculating references

Fixes

- Fixed an issue where the BOQ report did not show PSUM in the unit column
- Fixed an issue where BOQ settings were not correctly affecting the BOQ report

- Fixed an issue where the Number of pages and Bill Refs in BOQ's were different in saved PDF than in Print Preview window
- Fixed an issue where users were unable to insert an IFC due to missing date in the header
- Fixed an issue where after refreshing a job that uses a 2D plan revision, both versions of the plan were not visible
- Fixed an issue where Auto Select caused an error in the Viewport
- Fixed an issue in the BOQ report where Bill Ref changes were not starting from page 1 if using "print selected"
- Fixed a configuration file for Cubit Estimating to point at the correct URL for Cubit Select
- Fixed an issue where an exception is shown when refreshing a job after another user has completed a job revision and begun another job revision
- Fixed an issue where the Revert Revision confirmation dialog box would disappear occasionally
- Fixed an issue where Scale dialog box was not visible to the user
- Fixed an issue where users could insert rates and items from the active job
- Fixed an issue where "Recent Jobs" and "Last Used Plan" were not showing after restarting the application
- Fixed a crashing issue when trying to manipulate items that belong to a specific Trade
- Fixed an issue in shared mode where users could Undo an unindent into a trade without locking the trade first
- Fixed an issue where trades could end up in a dual state being both locked and unlocked if the user cancels out of the refresh prompt when adding a point to a shape
- Fixed an issue where an error was created importing EOX files
- Fixed an issue where an incorrect calculation was created when reusing shapes with a window and the new shape too small to calculate the window
- Fixed an issue where an error was reported when exporting estimate to Excel
- Fixed an issue where users were unable to use their Coding file correctly to update trade rates

- Fixed an issue where Revision indicator bars were not removed from estimate sheet after revision is finalised by another user
- Fixed an issue where Replace Drawing would produce an error if also using Rasterize Text
- Fixed an issue where selecting items in the Shapes Pane would not select more than two items when using shift+down arrow
- Fixed an issue when using the keyboard to edit BOQ and Result column, the user had to press F2 twice for dropdown to appear
- Fixed an issue where trade headings could have quantities when they should not be able to
- Fixed an issue where users cannot export certain jobs with plans
- Fixed an issue where users could create circular references
- Fixed an issue where an exception occurs when deleting a Plan after inserting a Window or Door
- Fixed an error when removing an IFC shape name in the details pane
- Fixed an issue where users could undo/redo a cell reference without a lock on trade
- Fixed an issue with the cost/m2 value not updating from template with job update
- Fixed an issue where the Estimate Sheet total was not correctly reflecting filtered variations
- Fixed an issue where revised plans were not opening after a job is closed which caused an error if trying to add another plan
- Fixed an issue where "AggregateQuantity" in Grouped Views is not calculating
- Fixed an issue where importing product codes with non-alphanumeric characters from a supplier's price list (CSV) into Ref Code would result in an error.
- Fixed an issue where lines disappear from dwg plan revision after applying revision to IFC plan
- Users will now be prompted to refresh job if another user has moved or replaced a plan
- Fixed an issue where users undo a result type change without a trade lock which caused a duplicate line entry
- Correctly Labelled "Numbering style" in BOQ options
- Fixed an issue where users could Undo a calculation or rate sheet item deletion without requiring a lock on trade

- Fixed an issue where hidden items were visible after refresh, but eye icon was not affected
- Fixed an issue where Cubit Estimating would crash when changing Coding file in update trade rates
- Fixed an issue where Cubit Estimating displayed an exception when adding a point to a shape that is being referenced in the estimate
- Fixed an issue where users could hide a shape that was deleted by another user causing an error
- Fixed an issue where an exception is created when user tries to edit a shape result that was deleted and then undeleted by another user
- Fixed an issue where after a revision has been reverted by another user, an exception was produced if another user added a new item
- Fixed an issue where an exception is created when user tries to edit the shape details that was deleted by another user
- Fixed an issue where copy-pasting a row reference while in shared access does not work as expected
- Fixed an issue where an exception is created if a user tries to delete a door or window from the shapes pane after another user has already done so
- Created a prompt for users to refresh if they try to add a changed shape to GFA
- Fixed an issue where an exception occurs when adding point to a shape after previously not locking the trades to which that shape belongs
- Fixed an issue where an error was shown when trying to insert trades and lines from Excel in shared access mode

Known Issues

- In some cases, depending on job and database size as well as hardware specifications, copying a job may take longer than in previous versions
- Deleting a large number of items, jobs, or entire projects, can sometimes take longer than in previous versions
- Customers with a large number of empty quantities in their estimate may find a longer than expected time to set empty quantities to 0 or 1 when sending data to Cubit Select

- In some cases, customers with large estimates can find longer than expected time to received picked rates from Cubit Select
- In some cases, an error may display when trying to load a plan that has the legend activated. This can be countered by deactivating the legend prior to displaying the plan

2022

Build: 11.1.3.0

Release Date: July 2022

Fixes

- Fixed an issue where an item that had been designated "**Exclude from Total**" or "**Exclude from Tax**" and used as an external reference in a separate job would appear to include the value after the job was closed and reopened.
- Fixed an issue where trade headings would show a value of 0.00 when no line items were ticked with "**Include in Trade**".

Known Issues

There is an issue regarding the existing external references that were created before 11.1.3.0 and utilise the "**Exclude from Total**" and "**Exclude from Tax**" functions.

To assist in navigating this issue, it is helpful to define the situation that users may encounter regarding external references that use the "Exclude from total" or "Exclude from Tax" function and when they were created. For the purposes of this explanation, we will use two terms to describe external references;

- **Old Reference** – these are external references marked "Exclude from Total" or "Exclude from Tax" that were created before updating to 11.1.3.0
- **New Reference** – these are external references marked "Exclude from Total" or "Exclude from Tax" that are created after updating to 11.1.3.0

We also need to define the time frames in which you have interacted with your jobs;

- **Not Opened** – jobs that have not been opened in **Shared Access** mode in versions 2022 or 2022.1
- **Opened** – jobs that have been opened in **Shared Access** mode in versions 2022 or 2022.1

Scenario A – What you should know about Old References that are Not Opened

In this scenario, the "Exclude from Total" and "Exclude from Tax" toggles in Old References will be corrected in the backend during the upgrade. They will remain excluded when you open the jobs in version 11.1.3.0 and future versions.

This is what you should expect:

- "Exclude from Total" and "Exclude from Tax" toggle will not have reset to "Include in Total" and "Include in Tax".
- The "Exclude from Total" and "Exclude from Tax" cells are no longer linked to the source cell. All other line item data remains linked.

Scenario B – Action required for Old References that are Opened

(Only applies to users who worked in the multi-user environment in Cubit 2022 or 2022.1)

In this scenario, as a result of the bug in the previous release, your **Old References** were automatically changed to "Include in Total" and "Include in Tax".

This is what you should do:

- We advise that you should check these **Old References** and ensure that they are correctly toggled.
- Once you have corrected the toggle, you do not need further interaction with it. Please understand however that the cell is no longer linked to the source cell. All other line item data remains linked.

Scenario C – What you should expect when creating New References

In this scenario you are creating **New References** in existing or new jobs and therefore can expect them to behave correctly after the fix;

This is what you should expect:

- The linked cells, including the "Exclude from Total" and "Exclude from Tax" toggles, remain in the correct state when reopening the job.
- Toggles are always linked to the external source unless you overwrite it.
- Data cells are always linked to the external source unless you overwrite it.

Scenario D – What you should know about exporting and importing jobs

- If you have exported a job from Cubit Estimating (any version) that holds an **Old Reference**, it will be treated in the same way as Scenario A if you import it to version 11.1.3.0 and future versions.
- If you create a **New Reference** in these imported jobs, they will be treated in the same way as Scenario C and will remain fully linked to their source.

2022

Build: 11.1.2.0

Release Date: June 2022

New Function

Auto-lock for Trades

You can now start working in Shared access mode and Cubit Estimating will automatically lock any relevant trades to your user account. This creates a more natural approach to your estimating workflow.

The following list shows some of the actions that will trigger the Autolock feature;

- Drawing or modifying a shape
- Creating or modifying a line item or heading
- Inserting from a Pricelist or Template
- Dropping a shape onto a line item from the Viewport
- Modifying a Calculation Sheet or Rate Sheet item
- Changing values in the details pane or shapes pane
- Adding a flag to an item

You will be prompted if a trade has been locked by another user.

You will still be required to manually unlock a trade when you have completed working.

You can also release all of your locked trades by exiting the job.

Additional Features & Improvements

- Performance improvements when opening the Job Manager

- A job list that takes 30 - 40 seconds to load in v10 and 60 - 80 seconds in v2022, now takes **20-22 seconds** in v2022.1
- **Note:** the performance improvements of opening a job list can be affected by the **database size** and **number of jobs**
- Performance improvements when opening a job
 - A job that takes 61 seconds to open in v10 and 78 seconds in v2022, now takes **13 seconds** in v2022.1
 - **Note:** the performance improvements of opening a job can be affected by the number and complexity of **references** in the job
- Performance improvements when refreshing a job
 - A job that takes 49 seconds to refresh in v2022, now takes **8 seconds** in v2022.1
 - **Note:** the performance improvements of refreshing a job can be affected by the number and complexity of **references** in the job
- Improved tooltips for the following columns
 - Conversion
 - Factor
 - No.
 - Wastage
 - Markup
 - Excl from Tax
- F9 shortcut key now works within price lists
- Copyright Year changed to 2022 in Cubit Estimating information
- Updated web browser control for login to Xero
- Updated message box for out of date references in Dark Skin mode
- Automatically displays 2D plan revisions with reopening a revised job
- Improvements to icons in context menu

Fixes

- Fixed an issue where an error would show when adding details to the Windows Library
- Fixed an issue when refreshing a job after another user has added or removed a point to/from a shape
- Fixed an issue where duplicate Ref Codes were created in shared access mode
- Fixed an issue where Cubit was unable to properly undo a deleted trade if it contains an item with a rate sheet
- Fixed issue with importing Excel/CSV into Job in shared access
- Fixed Error with importing Excel/CSV into Price List
- Resolved issue where refresh a job would return cursor selection to previous item
- Resolved issue when switching from shared to exclusive mode to rescale a plan. Scaling would result in an incorrect scale.
- Stopped creation of references to deleted shape results
- Fixed an issue where option heading configuration could be changed while another user had a trade locked
- Fixed an issue where the BuilderTrend export function creates Excel file that cannot be imported into BuilderTrend
- Resolved ability for a user to delete grouped views when another user has exclusive access
- Resolved error when undoing and redoing a deleted item
- "Refresh Job" icon no longer appears in ribbon for price list
- Fixed an issue where updated shape properties were not properly reflected in shared access mode.

- Resolved an issue in which upgraded licences were not reflecting upgraded feature sets.
- Fixed issue where Job total isn't recalculated when the estimate is updated from excel
- Fixed an issue with pasting external references with relative referencing
- Cubit Estimating now prevents trades from expanding when a new item is added in collapsed view
- Fixed an issue where the Revision status column in the IFC Shapes Pane was not showing icons at high DPI
- Fixed an issue where importing Excel file containing blank columns and blank rows into a Job would create an Unhandled Exception
- Moving Price List Items within a Price List now performs the same as within a Job
- Fixed an issue when using 'Backspace' on keyboard to clear a flag would not delete the associated comment.
- Fixed an issue in which Trade summary charts were showing "Exclude from total" items

2022

Build: 11.0.6.0

Release Date: January 2022

Enhancements

Multi-User Collaboration

Multiple users can now work in the same Job at the same time with our new Cubit Estimating Enterprise. You will be able to work freely on Trades, affecting your own takeoff and estimating while other users do the same.

We have introduced 3 features that enable Multi-User Collaboration:

- A new way to access a Shared Job
- You can lock Trades to yourself to disable other users from affecting them
- Improved User identity to better identify who has locked what Trade

	Description	Lock	Locked By	R...	Job%	Quantity	Unit	Rate	Mark...	Total
1	Concrete	🔒	Dave Mar...		11.20					31,105.00
1.1	Trim and grade under slab [Number of: 1]					287.00	m2	3.00	0%	861.00
1.2	Exc Strip footings					27.00	m3	95.00	0%	2,565.00
1.3	125 mm Slab on ground					43.00	m3	280.00	10%	13,244.00
1.4	125 mm Edge form to slab					109.00	m	13,244.00	0%	14,435.00
2	Brickwork	🔒			16.43					45,624.00
2.1	Common Bricks to ext walls					221.00	m2	95.00	0%	20,995.00
2.2	E/o for Face brickwork					11,473.00	bricks	2.00	0%	22,946.00
2.3	Expansion joints					91.00	m	18.50	0%	1,683.00
2.4	BOE Sills						m	32.50	0%	
3	Carpentry	🔒	Kylie Smith		51.55					143,158.00
3.1	Subfloor framing and sheet flooring					275.00	m2	60.00		16,500.00
3.2	Ext wall frames					254.00	m2	25.00		6,350.00
3.3	Supply and instal studs to external walls [Description: Shape 1]					209.00	no	5.00		1,045.00
3.4	Internal wall frames [Length: 2], [Description: Bed 3, Bed 3, Bath, Bath, WC, garage, hall, Study, Study, Study, WIR, Ensuite, Ensuite, Bed 2, Bed 1, Dining]					193.00	m2	36.00		6,948.00
3.5	Roof truss frame					193.00	m2	230.00		44,390.00
3.6	Supply and instal 2040 x 820 timber door					275.00	each	247.00		67,925.00
4	Plaster	🔒	Dave Mar...		13.16					36,535.00
4.1	10 mm Plaster to walls					419.00	m2	54.00	10%	27,377.00
4.2	R 2.5 Batts to Ext wall						m2	45.00	0%	

Multi-User Collaboration

Job Access

In Cubit Estimating Enterprise, there are now 2 ways to access a Job:

- the newly introduced **Share Job Access** (multiple users in a Job)
- the existing **Exclusive Job Access** (single user in a Job)

By default, Jobs are opened in **Shared Access**, but this can be changed from **Settings**.

Shared

When you open a Job with **Shared Job Access**, other users can open that Job and are able to work within it at the same time. When collaborating in a Job, you will need to Lock a Trade to work on it, but you can lock more than one Trade at any one time.

Shared Access is how Jobs in Cubit Estimating Enterprise are opened by default.

For actions that can affect the entire Job, you will require a temporary Job-wide lock; these include:

- Assigning, enabling, disabling and configuring Options
- Changing Option and Variation filters
- Adding, deleting and editing Variation Codes
- Sending or receiving a Job from Cubit Select
- Generating, printing and previewing BOQ
- Beginning, finishing or reverting a Job Revision
- Adding or reverting a Plan Revision

These locks will require you to be able to lock all Trades in the Job.

Exclusive

You can change a Job to **Exclusive Job Access** from within a Job or when opening a Job in the **Job Manager** if no one else has the Job open. When you have a Job open with Exclusive Job Access enabled, other users will only be able to open that Job as Read-Only and will be unable to affect takeoff or the estimate.

Exclusive access is the default Job Access for Cubit Estimating and Cubit Estimating Pro.

Trade Lock

To collaborate within a Job, you will be required to Lock a Trade to yourself to work in it. You can Lock a Trade from the Trade itself or any Headings and Items within that Trade. There are 4 ways you can do this:

- Click the Trade Lock button in the Estimate toolbar
- Click in the Trade Lock column of the Item Sheet
- Press the shortcut key (Ctrl + L)
- Select Lock Trade from the context menu

You can lock a Trade when you have the Trade or any Heading or Item within that Trade selected. You can lock multiple Trades at the same time.

When someone else has locked a Trade, you will see the name of the User as a tooltip over the Lock icon, and see their name in the **Locked by** column. Trades can only be locked within Cubit Estimating Enterprise.

Improved User Identification

You will now see your name against a Locked Trade within a Job, and a Locked Job from the **Job Manager**. You can also now edit your **Name**, **Email**, and **Password** from within Cubit Estimating, by clicking your name at the top right of the **Job Manager**.

Refresh Job

Now you can Refresh a Job you've opened if it's open as Read-Only or if you have the Job open in Shared Access. Refreshing a Read-Only Job will update the Job with any changes made since you last opened or refreshed that Job.

Last Updated Status

The Last Updated Status bar at the bottom of a Job will reflect when the Job was last updated. After 15 minutes, the Job will show a warning icon in this status bar, clicking this will also let you refresh your Job.

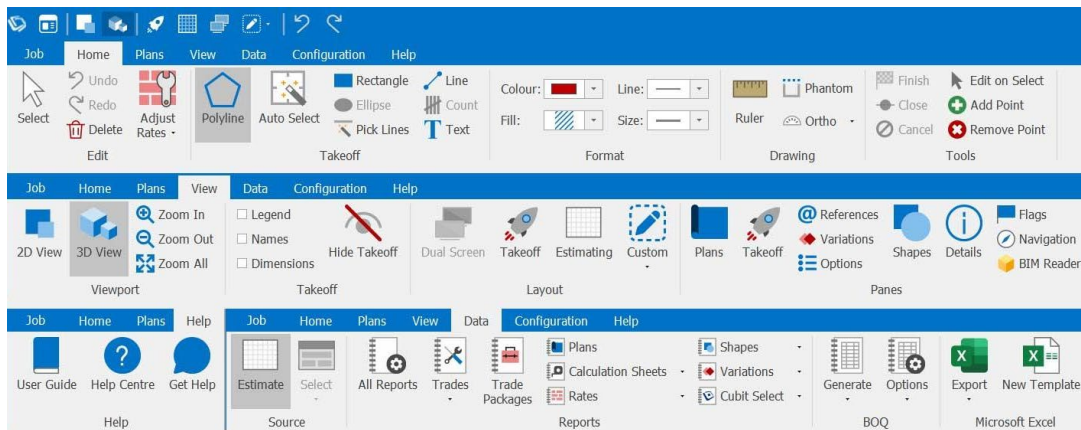
Enhanced User Experience

We've improved the User Experience throughout Cubit Estimating. We've improved the ribbon and **Settings** menu, so using the software is more intuitive. We have redesigned every icon in Cubit Estimating so they not only work better for 4K or higher resolutions but also for our new **Dark Mode** skin.

New Icons

We have refreshed and modernised the icons throughout Cubit Estimating. This redesign utilises vector technology to look better on all screens, including those set to 4k resolutions and higher.

We've introduced more consistent theming in the icons, so it's more obvious what features the icons are representing, both inside a Job, a Price List, and from the Job Manager.



Updated Cubit Estimating interface

Improved Pane interfaces

We have renamed **New Task** pane to **Takeoff** pane.

From the **Shapes**, **Plans**, and **Referencing** panes, we have made the tabs more defined, with an icon and label.

Updated Ribbon

We have updated the ribbon user interface across Cubit Estimating, including from a Job and the Job Manager. These improvements were done to better group and label various features together, and convey what tasks various features are performing.

Job Manager

From the **Job Manager**, we've moved **Open** to be the first position and added **New Folder** into the List group, which was otherwise only available from the context menu.

Within a Job

From the **Home** tab, we've consolidated the **Openings** and **Insert** groups together and added drop openings controls when inserting a **Window/Window Opening** or **Door/Door Opening**.

From the **Plans** tab, we have moved the features in the **Plan Options** group to a new **Optimise** group, where **Flatten PDF**, **Rasterise Text**, and **Single Colour** are checkboxes in the ribbon.

From the **View** tab, we've removed the **View** and **Display** groups and added a **Viewport** and **Takeoff** group. From the **Viewport** group, setting the view to **2D** or **3D** is the first option, with **Zoom** controls next to that. From the **Takeoff** group, **Legend**, **Names**, and **Dimensions** are checkboxes that will let you show or hide these respective details on your takeoff.

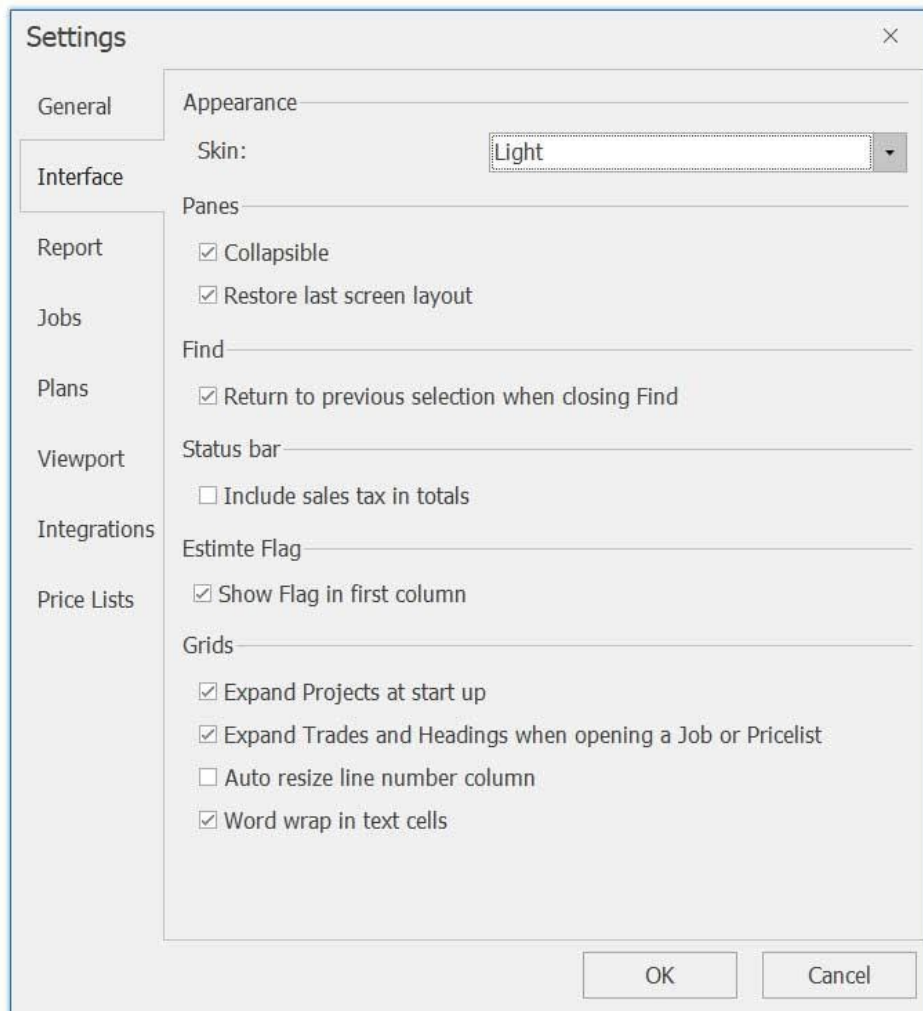
From the **Data** tab, we've moved the **Import** and **Export** groups into a new **Integrations** group under the new drop-down menus for **Import** and **Export**.

We've introduced a new **Help** tab. From here you can access the **User Guide**. You can also click **Help Centre** and **Get Help**, which will launch your internet browser so you can access the Help Centre or submit a support ticket, respectively.

Cubit Settings

We've renamed **Options** to **Settings**, where we've also introduced a new **Interface** tab. From this new tab you can select the **Skin** and configure panes and grids.

We've also rearranged some settings, so now only defaults for new Jobs can be accessed from the **Jobs** tab, and any options that take effect immediately can be accessed from the **General** tab.



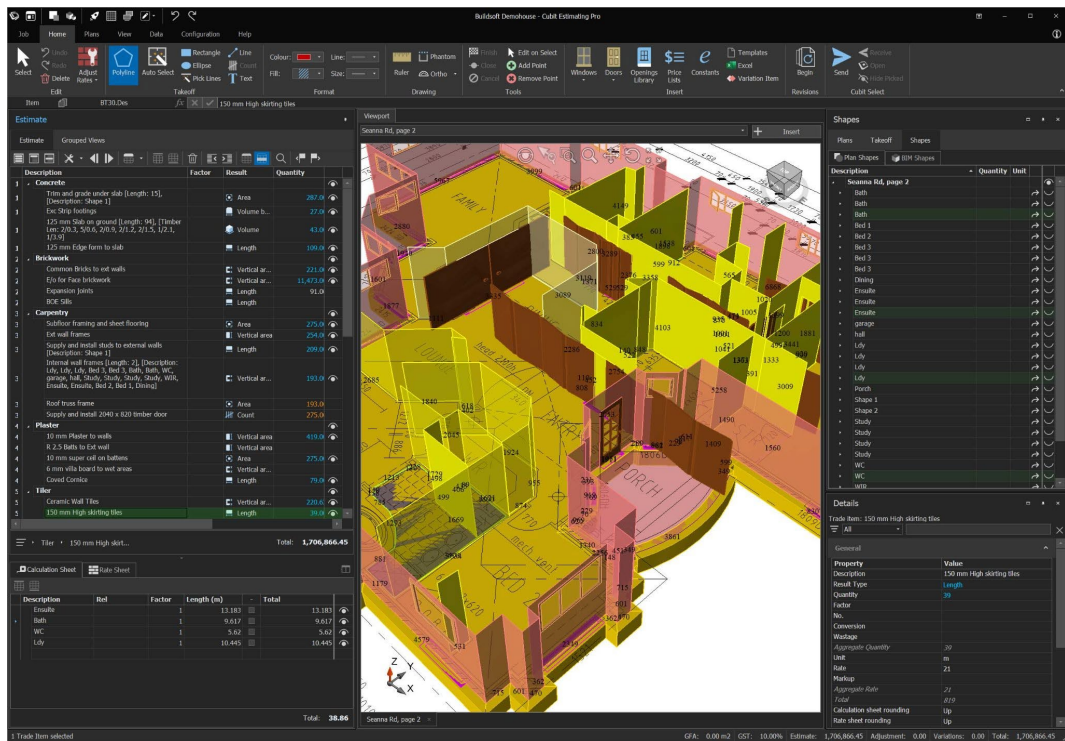
Interface tab in Settings

Dark & Light Modes

We've updated the look of Cubit Estimating with the introduction of **Light Mode** and **Dark Mode**. You can toggle between these options to find a look that's best for you.

You can change between these options in Cubit Settings, from the Interface tab.

The Light Mode utilises some existing interface settings, while Dark Mode is a brand new look.



New Dark Mode

Exclude from Sales Tax

You can exclude an Item from being included when calculating your Sales Tax.

There is a new column available in the **Item Sheet** and **Rate Sheet** labelled **Exclude from tax**.

By default, from this column, Items will be unchecked. You can check this box, which will then exclude the row from being included in your Sales Tax.

Code Grouping Improvements

Managing Codes

There is a new Grouping Codes window that you can access by clicking **Manage Codes** from within a Job, this consolidates **Edit Columns** and **Code Groups** windows into one. So now you can assign Codes to a Job by checking Assigned and edit Codes from the same window.

We've added a new toolbar to help you manage your Codes in the **Grouping Codes** window.

These include:

- **Add Heading, Add and Insert Item, and Delete.**
- **Insert Heading**
- **Add Item**
- **Insert Heading**
- **Delete**
- We've improved default column widths when adding Codes to a Job, so you can, by default, see more of your **Descriptions**.
- When you hover your mouse over a Code, the tooltip will show the **Description** of that Code.

Job Grouping

There are new tools and features available when Grouping a Job and when viewing a Grouped Job.

- We've added buttons from the Estimate toolbar, so you can click to see only **Trade Summary, Show Selected Trades, or Show all Items**.
- There is a new option that you can check named **Expand Grouped View by default**, which can be found on the **Interface** tab of **Settings**.
- You can now use **Export Selected** when exporting to Microsoft Excel when your source is set to a Grouped View.
- When Grouping a Job, you can set the **Code Position**, selecting between **Display on right** or **Display on left**.

Improved Imperial Display and Input

Cubit Estimating now supports additional input and display of FIS (Feet Inch Sixths) and FIF (Feet Inch Fractions) for lengths.

Display

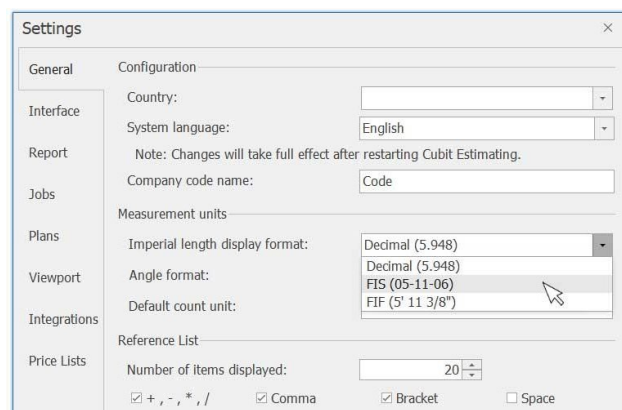
You can now change how lengths are shown for an Imperial Job. By default, **Decimal** is selected, but from the **General** tab in **Settings** you can change this to FIS or FIF.

Changing this option will affect how lengths are shown for Items set with a Result of **Length** or **Length less openings** or **Length by Centre** and for Shapes in the **Viewport**.

Input

Cubit Estimating will let you enter FIS and FIF formatted quantities in your Estimate. You can use spaces to enter FIS values and you can enter an FIF value with a prime mark following the feet, and a double prime after the inch and fraction.

Cubit Estimating will display the default set for **Imperial length format**, but will convert your input value to the display set.



Length Display format options

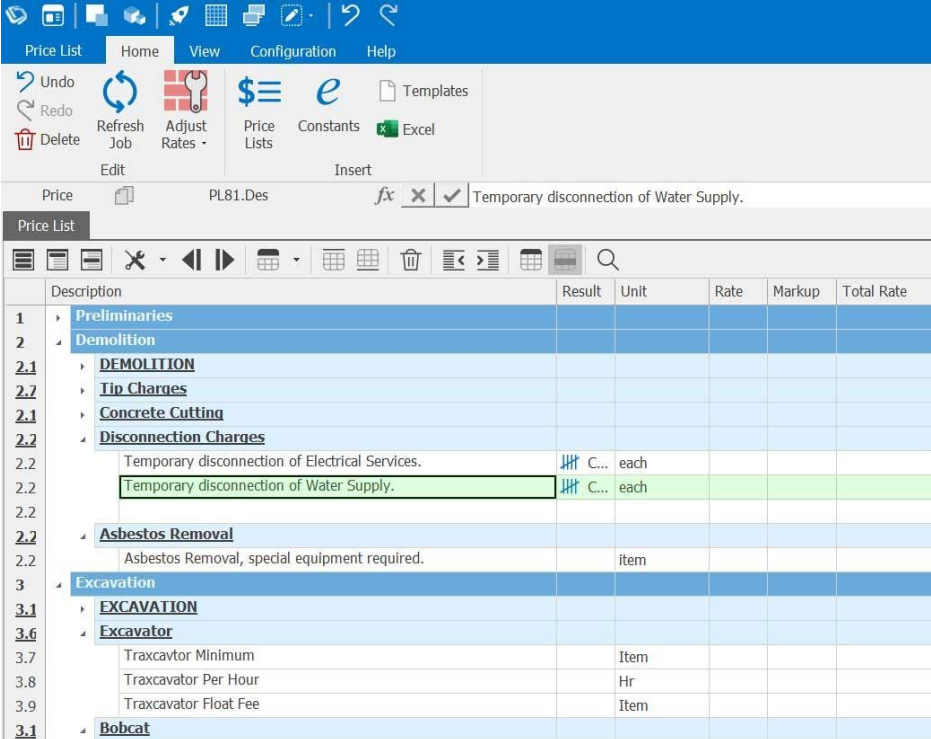
Windows 11 Compatible

Cubit Estimating is now supports Windows 11, so you can work comfortable the latest operating system.

Price List Improvements

We've added the estimate toolbar for Price Lists, so it's much easier to build up a Price List. You can utilise the new buttons to Create and Add a Trade, Heading, or Item. You can also utilise the shortcut keys from a Job for this too, including **Ctrl+T** for a Trade, or **Ctrl + I** for an Item.

We've also improved how Cubit Estimating will maintain references between a Job and a Price List, so when sharing a Job and Price List, the references can be maintained.



The screenshot displays the Cubit Estimating software interface for a Price List. At the top, there is a ribbon menu with tabs for 'Price List', 'Home', 'View', 'Configuration', and 'Help'. Below the ribbon is a toolbar with various icons for actions like Undo, Redo, Delete, Refresh Job, Adjust Rates, Price Lists, Constants, and Excel. The main window shows a table with columns for Description, Result, Unit, Rate, Markup, and Total Rate. The table is organized into a hierarchical structure with expandable sections for Preliminaries, Demolition, Excavation, and Bobcat. A specific item, 'Temporary disconnection of Water Supply', is highlighted in green.

	Description	Result	Unit	Rate	Markup	Total Rate
1	▶ Preliminaries					
2	▶ Demolition					
2.1	▶ DEMOLITION					
2.7	▶ Tip Charges					
2.1	▶ Concrete Cutting					
2.2	▶ Disconnection Charges					
2.2	Temporary disconnection of Electrical Services.		C...	each		
2.2	Temporary disconnection of Water Supply.		C...	each		
2.2						
2.2	▶ Asbestos Removal					
2.2	Asbestos Removal, special equipment required.			item		
3	▶ Excavation					
3.1	▶ EXCAVATION					
3.6	▶ Excavator					
3.7	Traxcavtor Minimum			Item		
3.8	Traxcavtor Per Hour			Hr		
3.9	Traxcavtor Float Fee			Item		
3.1	▶ Bobcat					

Estimate toolbar in a Price List

New Localisation Settings

As Cubit Estimating continues to reach more customers around the world, we have introduced some new features to help users across the world; including a first-run settings confirmation window and the ability to set your **Country**.

First-run Confirmation

When installing Cubit Estimating for the first time, a user will see a confirmation window that lets you confirm your **Country**. The different countries have different defaults that best fit those locations, including setting the **Language**, assigning a default **Measurement Type**, and setting the name and rate for the **Sale Tax**.

This won't affect existing installations, except you will be able to set your **Country** in the settings menu.

The image displays four screenshots of the 'Welcome' window for different countries, arranged in a 2x2 grid. Each window contains the following fields:

- Country:** A dropdown menu with the selected country name.
- Language:** A dropdown menu with the selected language.
- Measurement Type:** A dropdown menu with the selected measurement type.
- Sales tax name:** A text input field with the selected sales tax name.
- Sales tax rate (%):** A text input field with the selected sales tax rate.
- Get Started:** A button at the bottom right of each window.

The four screenshots are for the following countries and their respective settings:

- USA:** Country: USA, Language: English - US, Measurement Type: Imperial, Sales tax name: Sales Tax, Sales tax rate (%): 10.00.
- Australia:** Country: Australia, Language: English, Measurement Type: Metric, Sales tax name: G.S.T, Sales tax rate (%): 10.00.
- UK:** Country: UK, Language: English, Measurement Type: Metric, Sales tax name: VAT, Sales tax rate (%): 20.00.
- Ireland:** Country: Ireland, Language: English, Measurement Type: Metric, Sales tax name: VAT, Sales tax rate (%): 13.50.

New Welcome window

BOQ Improvements

- We've improved how long **Descriptions** are cut off, so now three ellipses indicate that the Description is cut off.
- Fixed an issue where long Trade names were being cut off.
- Fixed an issue where font sizes were sometimes changing within a Trade, Heading or Item in a BOQ Report.
- Fixed an issue where the BOQ was generated with a single Heading per page.
- Fixed an issue where sometimes an extra line was inserted between the rows of a Heading when **Print Blank line between continued headings** is checked.
- Fixed a rare issue where if a certain character limit was reached for a Continued Heading, the BOQ Report might attempt to generate pages indefinitely.
- Fixed an issue where sometimes Descriptions with 'Extra Over' was not underlined when **Underline Extra Over** was checked.
- Fixed an issue where some Items were doubling up when not printing to A4.

Additional Features & Improvements

- You can now **Pause** referencing from updating in real-time within a Job and **Recalculate** References from the new Referencing group in the ribbon. By default, **Pause Sync** is enabled when a Job is in **Shared Access**.
- There are **Aggregate Rate** and **Aggregate Qty** columns in **Rate Sheets** and **Grouped Views**.
- You can now enter equals at the beginning of a formula when entering one.
- You can now **Undo** and **Redo** from the Quick Access toolbar.
- By default, **Flatten PDF** is checked when installing Cubit Estimating for the first time.
- We've improved default column widths, so they display better when you're using a scaling on a computer of higher than 100%.
- We've removed **Cordell Direct** integration as CoreLogic will no longer be managing or offering this platform.
- You can now move the columns from the Item sheet when your Job is opened with **Material/Labour** mode.

Fixes

- Fixed an issue where all Projects were expanded in the Job Manager when closing a Job.
- Fixed an issue where the **Cascade** setting was reset to **Down** every time you opened the **Insert Price List** window.
- Fixed an issue where some Jobs weren't sorting correctly when sorting Jobs by their Totals in the **Job Manager**.
- Fixed an issue where Totals were not updated when clearing a **Rate Sheet** until you closed and reopened a Job.
- Fixed an issue where a new Job created from a Price List Template would clear the **Sales tax Name** and **Rate**.
- Fixed an issue where some values were reflected as a negative value in the **Calculation Sheet** when importing an EOX file.
- Fixed an issue where the **Openings Library** from the Job Manager would always show values in metric.
- Fixed an issue where pinned Windows and Doors were always showing their values in metric.
- Fixed a rare issue where you weren't able to open a Job that included a Plan with missing components.
- Fixed a rare issue where sometimes you couldn't Import a Job to replace an existing Job.
- Fixed an issue where some Global EOX Jobs would not import correctly into Cubit Estimating.
- Fixed an issue where sometimes from a Price List, when changing a Heading to an Item an error message might appear.
- Fixed an issue where Cubit Estimating might freeze after accessing **Gross Floor Area**.
- Fixed a rare issue where sometimes Cubit Estimating wasn't connecting to Cubit Select.
- Fixed an issue where importing an updated Price List wasn't replacing the existing Price List.

- Fixed an issue where sometimes Headings for **Options** and **Variations** were being deleted when creating Items underneath that Heading.
- Fixed an issue where after updating your Job having empty Reference Codes you might have used in your SUM or TSUM formula, you wouldn't be able to open it.
- Fixed an issue where the **Markup** of a Heading was not imported when Inserting from Microsoft Excel.
- Fixed an issue where changing the Code for a row copied from Calculation Sheets would change the Code for the original row.
- Fixed an issue when using Ctrl + M to Flag an Item created from using F4 would clear the **Description** of the Item.
- Fixed an issue where newly added Flags were not being included when going to Previous or Next Flags.
- Fixed a rare issue where sometimes when creating formulas with References and using multiplication and negative values might be changed when recalculating the formula.
- Fixed an issue where an error message was sometimes displayed when double-clicking a Job to open from the **Job Manager** if that Job had been deleted by another user.
- Fixed a rare issue where you might not have been able to open a Job if any value field, like **Rate** or **Quantity**, was using a number with 30 or more digits.

Licencing

Cubit Estimating Pro + BIM will now be known as Cubit Estimating Enterprise. This version will include the existing BIM features and the job collaboration features.

Compatibility

Cubit Estimating 2022 is compatible with Windows 11.

Cubit Estimating 2022 is compatible with:

- Global Estimating 2019
- Offsider Estimating 2019

Known Issues

There is a known issue when Importing a Job into Cubit Estimating Enterprise and rescaling a Plan within that Job the takeoff quantities will show as 0. If you close and reopen the Plan when rescaling it, this will not happen, and if you show 0 quantities this will fix those values.